



8015 Vimy Ridge Road
Port Hope, Ontario

MAIN LEVEL

*Approx. raw sq. ft.: 2,447



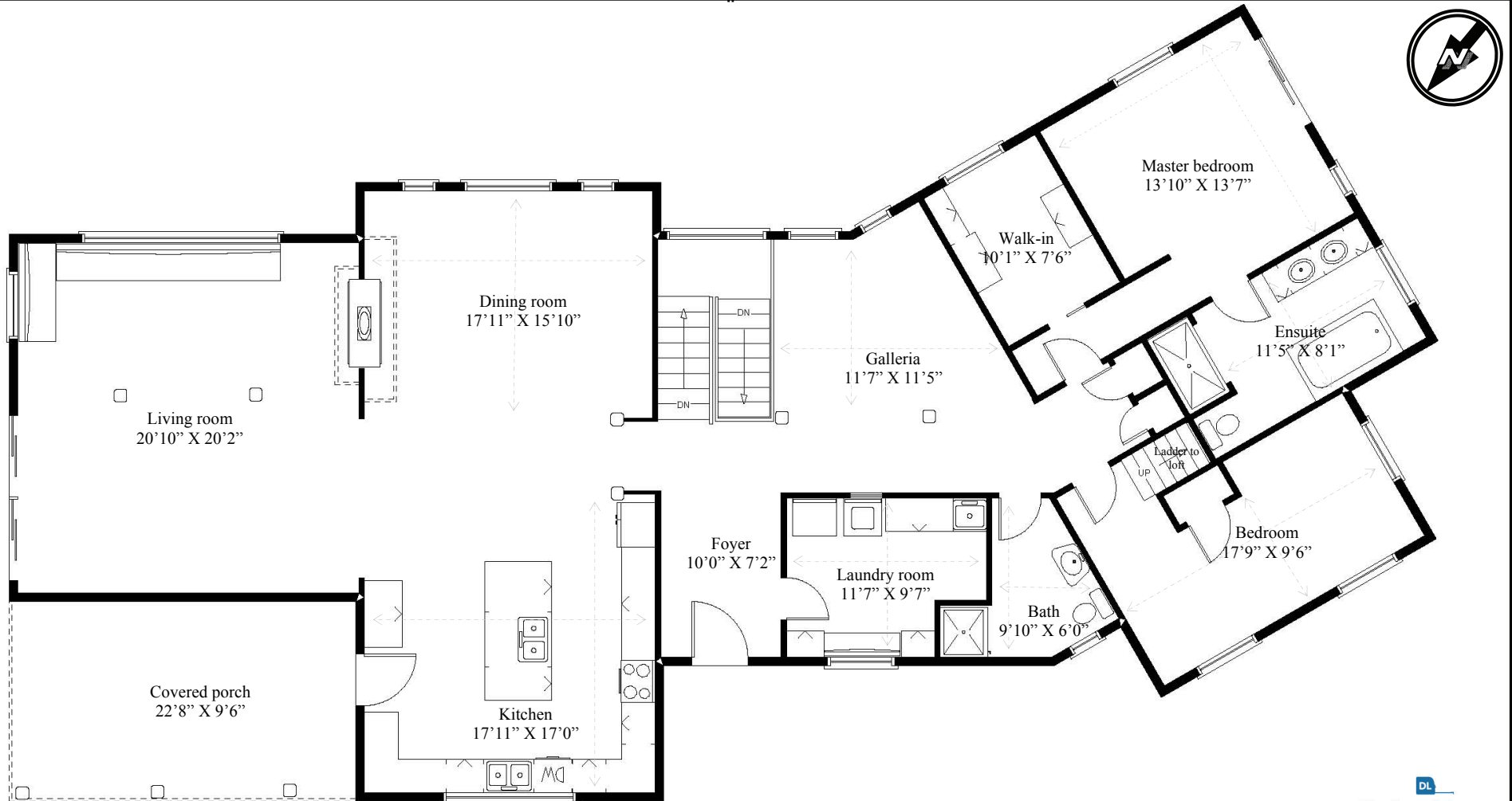
Patrick & Dee McGee (listing representatives)
Chestnut Park Real Estate Ltd.

46 Pine Street South
Port Hope, ON L1A 3E9

Office: 905-800-0321

Email: mail@mcgees.ca

Website: www.mcgees.ca



Note: This floor plan is an artistic rendering only. All dimensions are approximate. Defined Lines and the listing agent make no representation or warranty as to this rendering's accuracy and no measurements or dimensions should be relied upon without independent verification.

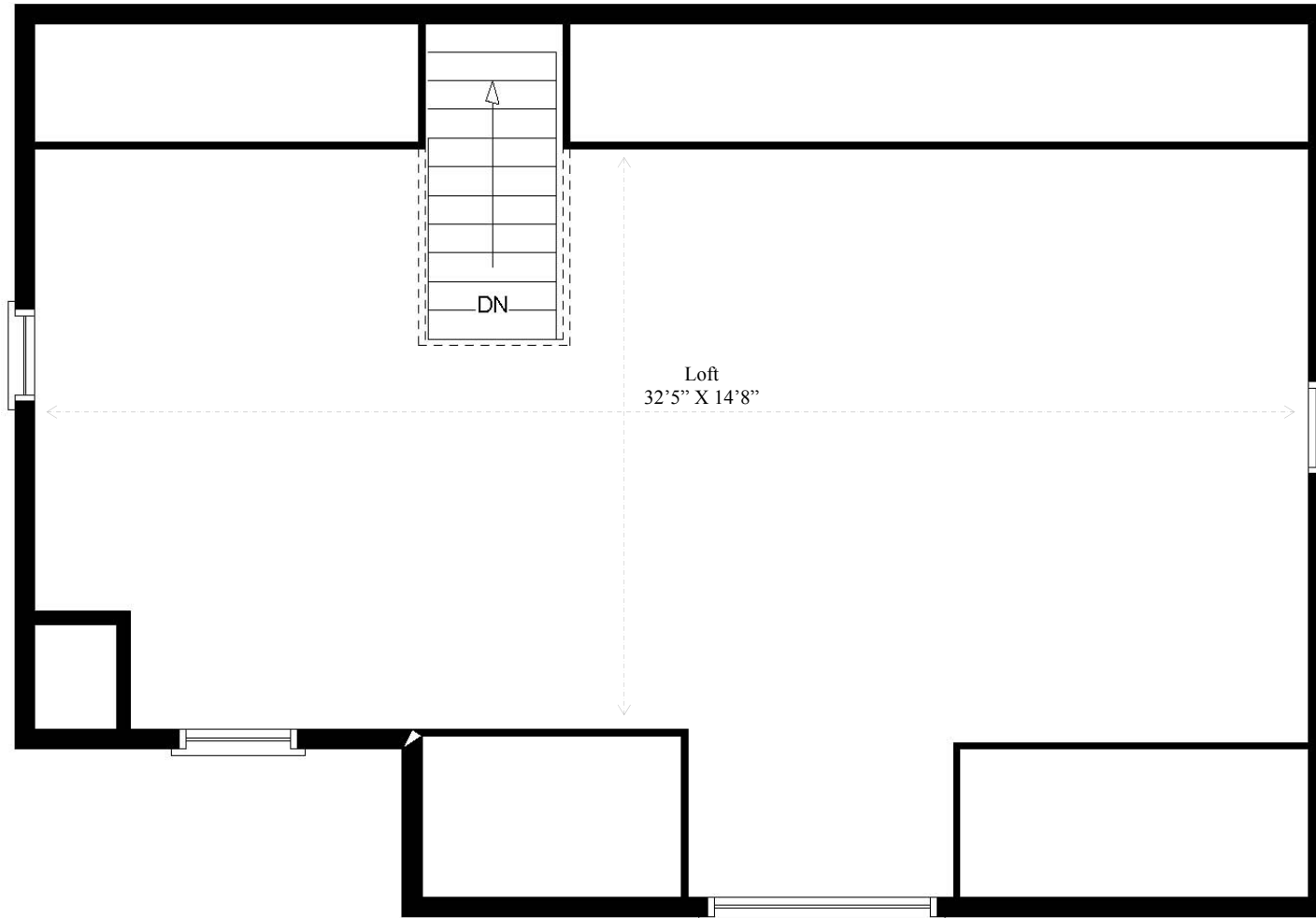
DL
Defined Lines
Plan for the Sale™
www.definedlines.ca

(Scroll to view other levels)

8015 Vimy Ridge Road
Port Hope, Ontario



LOFT



Listing Rep:



Patrick & Dee McGee, Chestnut Park Real Estate Ltd.

Tel: 905-800-0321 **E-mail:** mail@mcgees.ca **Website:** www.mcgees.ca

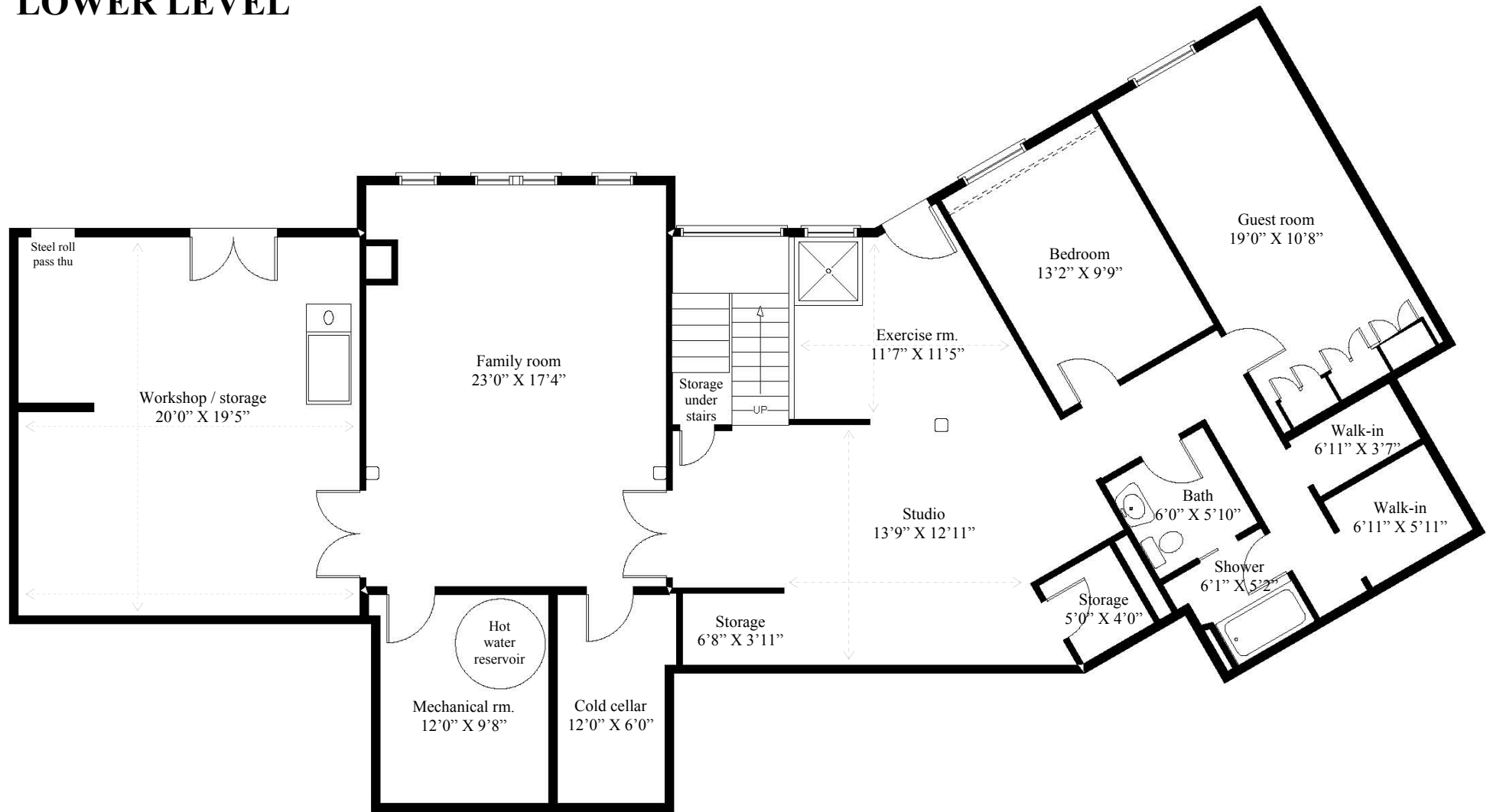
Note: This floor plan is an artistic rendering only. All dimensions are approximate. Defined Lines and the listing agent make no representation or warranty as to this rendering's accuracy and no measurements or dimensions should be relied upon without independent verification.

DL
Defined Lines
Plan for the Sale™
www.definedlines.ca

(Scroll to view other levels)

8015 Vimy Ridge Road
Port Hope, Ontario

LOWER LEVEL



Listing Rep:



Patrick & Dee McGee, Chestnut Park Real Estate Ltd.

Tel: 905-800-0321 E-mail: mail@mcgees.ca Website: www.mcgees.ca

Note: This floor plan is an artistic rendering only. All dimensions are approximate. Defined Lines and the listing agent make no representation or warranty as to this rendering's accuracy and no measurements or dimensions should be relied upon without independent verification.

DL
Defined Lines
Plan for the Sale™
www.definedlines.ca

(Scroll to view other levels)